

<b>Engine</b>	Cummins QSM11
<b>Gross Power</b>	261 kW (355 hp) @ 2,100 rpm
<b>Net Power</b>	248 kW (337 hp) @ 2,100 rpm
<b>Operating Weight</b>	36,145 kg
<b>Rated Load</b>	25,000 kg
<b>Standard Breakout Force</b>	251 kN
<b>Maximum Raise Height</b>	3,400 mm

# 890

WHEEL LOADER



TOUGH WORLD. TOUGH EQUIPMENT.

# 890 SPECIFICATIONS >>>

## ENGINE

Emission Regulation	Tier 2/ Stage II
Make	Cummins
Model	QSM11
Gross Power	261 kW (355 hp) @ 2,100 rpm
Net Power	248 kW (337 hp) @ 2,100 rpm
Peak Torque	1,776 N · m @ 1,400 rpm
Displacement	10.8 L
Number of Cylinders	6
Aspiration	Turbocharged & Air-to-air intercooled

## TRANSMISSION

Transmission Type	Countershaft, power shift
Torque Converter	Single stage, three elements
Maximum Travel Speed, fwd	35.5 km/h
Maximum Travel Speed, rev	25.7 km/h
Number of Speeds, fwd	4
Number of Speeds, rev	3

## AXLES

Differential Front Type	Limited slip
Differential Rear Type	Conventional
Axle Oscillation	±13°

## STEERING

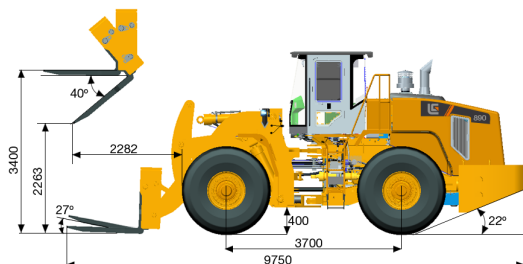
Steering Configuration	Articulated
Steering Relief Pressure	20.7 MPa

## BRAKES

Service Brake Type	Wet discs brake
Service Brake Actuation	Hydraulic
Parking Brake Type	Manual electronic control
Parking Brake Actuation	Hydraulic

## HYDRAULIC SYSTEM

Main Pump Type	Piston
Main Relief Pressure	26 MPa
Raise Time	6 s
Dump Time	2.1 s
Float Down Time	3.4 s
Fastest Total Cycle Time	11.5 s



## LOADER ARM PERFORMANCE

Tipping Load - Straight	25,300 kg
Tipping Load - Full Turn	22,950 kg
Fork Breakout Force	251 kN
Maximum Dump Angle at Full Height	40°
Dump Clearance at Full Height Discharge	2,263 mm
Dump Reach at Full Height Discharge	2,282 mm
Maximum Hinge Pin Height	3,700 mm
Maximum Digging Depth, Fork Level	70 mm
Fork Rollback at Ground Level	27°
Fork Rollback at Carry	27°
Fork Rollback at Maximum Height	45°

## FORK PERFORMANCE

Rated Load	2,5000 kg
------------	-----------

## DIMENSIONS

Length with Fork Down	9,750 mm
Width Over Tires	3,300 mm
Wheelbase	3,700 mm
Wheel Tread	2,420 mm
Ground Clearance	400 mm
Turn Angle, Either Side	37°
Rear Angle of Departure	22°
Turning Radius, Outside of Tire	7,175 mm
Turning Radius, Center of Tire	6,739 mm
Turning Radius, Fork Carry	6,485 mm

## TIRES

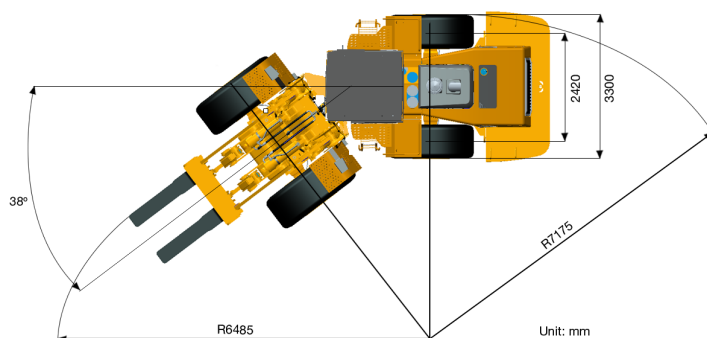
Tire Size	29.5 R 25
-----------	-----------

## OPERATING WEIGHTS

Operating Weight	36,145 kg
------------------	-----------

## SERVICE CAPACITY

Fuel Tank	485 L
Engine Oil	35 L
Cooling System	41 L
Hydraulic Reservoir	402 L
Transmission and Torque Converter	70 L
Axles, each	60 L



## Guangxi Liugong Machinery Co., Ltd.

No. 1 Liutai Road, Liuzhou, Guangxi 545007, PR China  
T: +86 772 3886124 E: overseas@liugong.com  
www.liugong.com

Specifications and designs are subject to change without notice. Machines shown may include optional equipment.

12/2014 Designed by Liugong