

Chassis Model	LIUGONG CLG5410J
Emission Stage	Euro III
Engine Rated Power	247 / 2,200 kW/(r/min)
Max. Rated Lifting Load	50 t
Max. Lifting Height of Main Boom	43.5 m
Max. Travel Speed	80 km/h
Outrigger Longitudinal/Transversal Span	5,900/6,900 mm

TC500 TRUCK CRANE



TOUGH WORLD. TOUGH EQUIPMENT.

TC500 SPECIFICATIONS >>>

CHASSIS

Model Number	CLG5410JQZ50
Chassis Model	CLG5410J
Engine Model	ISLe340 30
Emission Regulation	Euro 3
Engine Rated Power	247 / 2,200 kW/(r/min)
Engine Displacement	9.7 L
Driving Type	8X4
Wheelbase	1,500+4,075+1,350 mm
Max. Running Speed	80 km/h
Economic Fuel	45 L/ 100 km
Min. Turning Radius	11 m
Max. Grade Ability	43%
Approach/Departure Angle	19/12°
Tyre Type	12.00 R20

DIMENSIONS & WEIGHT

Overall Length	13,830 mm
Overall Width	2,800 mm
Overall Height	3,600 mm
Overall Net Weight	40,500 kg

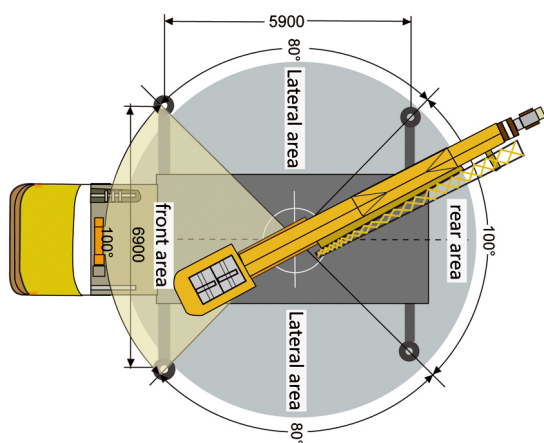
BOOM SYSTEM

Boom Type	5 unit
Slewing Range	270°
Height of Basic Boom	11.4 m
Max. Rated Lifting Torque of Basic Boom	1,822.5 KN • m
Max. Lifting Height of Main Boom	43.5 m
Max. Rated Lifting Torque of Booms Full Extended	962 kN • m
Max. Lifting Height of Jib	60 m
Outrigger Longitudinal Span	5,900 mm
Outrigger Transversal Span	6,900 mm

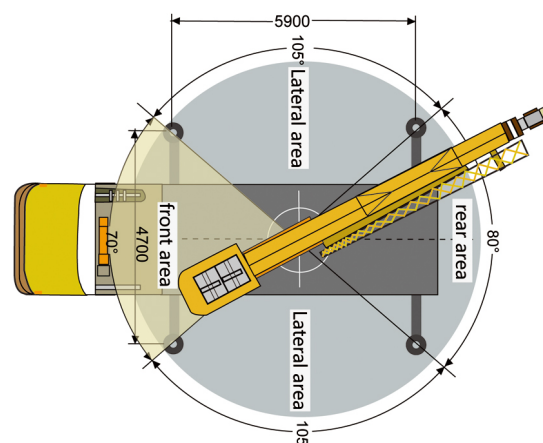
HYDRAULIC SYSTEM

Hydraulic System Type	open loop
Main Hydraulic Pump Type	CB-KpR63/63/32/08
Main Hydraulic Pump Displacement	63/63/32/08 ml/r
Main Hydraulic Motor Type	A6V107HA22FZ1058
System Working Pressure	20 MPa
Max. Slewing Speed	2 r/min
Max. Hoisting Speed	120 m/min
Max. Boom Telescoping Time	220/220 s
Max. Boom Elevating Time	96/150 s
Hydraulic Oil Tank Capacity	700 L

Diagram of Working Zone



Work Zone in Outriggers fully extended



Work Zone in Outriggers half extended