

<b>Engine</b>	Cummins
<b>Gross Power</b>	235 kW (315 hp) @ 2,100 rpm
<b>Net Power</b>	212 kW (284 hp) @ 2,100 rpm
<b>Operating Weight</b>	30,000 kg
<b>Standard Bucket Size</b>	4.5 m <sup>3</sup>
<b>Standard Breakout Force</b>	260 kN
<b>Standard Dump Clearance</b>	3,330 mm

# 888

Wheel Loader

 **LIUGONG**



**TOUGH WORLD. TOUGH EQUIPMENT.**



**ENGINE**

Emission Regulation	Tier 2 / Stage II
Make	Cummins
Gross Power	235 kW (315 hp) @ 2,100 rpm
Net Power	212 kW (284 hp) @ 2,100 rpm
Peak Torque	1,600 N · m @ 1,400 rpm
Displacement	10.8 L
Number of Cylinders	6
Aspiration	Turbocharged

**TRANSMISSION**

Transmission Type	countershaft power shift
Torque Converter	single-stage, three-element
Maximum Travel Speed, fwd	35 km/h
Maximum Travel Speed, rev	24.5 km/h
Number of Speeds, fwd	4
Number of Speeds, rev	3

**AXLES**

Differential Front Type	conventional
Differential Rear Type	conventional
Axle Oscillation	±13°

**STEERING**

Steering Configuration	articulated
Steering Relief Pressure	20 MPa

**BRAKES**

Service Brake Type	wet multi disc
Service Brake Actuation	hydraulic
Parking Brake Type	auto and manual electronic controlled
Parking Brake Actuation	spring apply; hydraulic release

**HYDRAULIC SYSTEM**

Main Pump Type	gear
Main Relief Pressure	20.7 MPa
Raise	6.9 s
Dump	1.6 s
Float Down Time	3.3 s
Fastest Total Cycle Time	11.8 s

**LOADER ARM PERFORMANCE**

Tipping Load - Straight	25,755 kg
Tipping Load - Full Turn	21,960 kg
Bucket Breakout Force	260 kN
Maximum Dump Angle at Full Height	45°
Dump Clearance at Full Height Discharge	3,330 mm
Dump Reach at Full Height Discharge	1,460 mm
Maximum Hinge Pin Height	4,490 mm
Maximum Digging Depth, Bucket Level	118 mm
Bucket Rollback at Ground Level	45°
Bucket Rollback at Carry	49°
Bucket Rollback at Maximum Height	63°

**BUCKET PERFORMANCE**

Reference Bucket	4.5 m <sup>3</sup>
------------------	--------------------

**DIMENSIONS**

Length with Bucket Down	9,270 mm
Width Over Tires	3,170 mm
Wheelbase	3,530 mm
Wheel Tread	2,420 mm
Ground Clearance	476 mm
Turn Angle, Either Side	38 °
Rear Angle of Departure	24.5 °
Turning Radius, Outside of Tire	6,760 mm
Turning Radius, Center of Tire	6,335 mm
Turning Radius, Bucket Carry	7,570 mm

**TIRES**

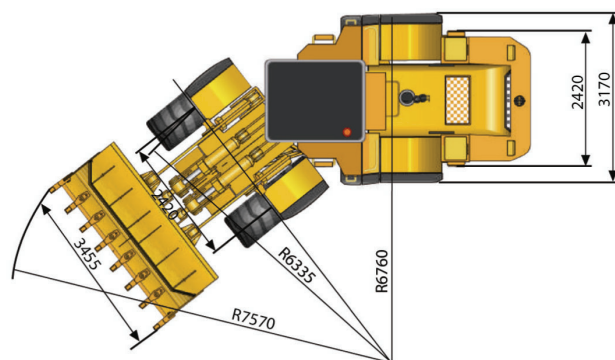
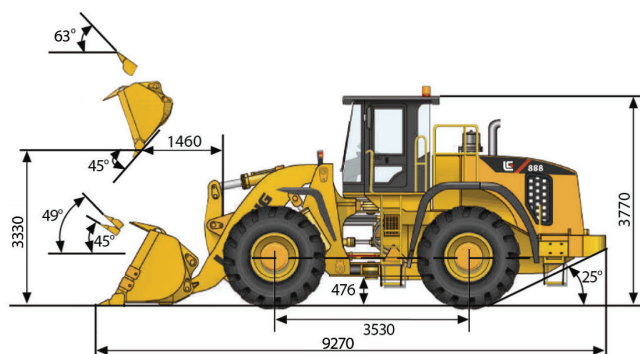
Tire Size	29.5 - 25
-----------	-----------

**OPERATING WEIGHTS**

Operating Weight	30,000 kg
------------------	-----------

**SERVICE CAPACITIES**

Fuel Tank	445 L
Engine Oil	33 L
Cooling System	41 L
Hydraulic Reservoir	250 L
Transmission and Torque Converter	70 L
Front Axle	65 L
Rear Axle	65 L



Unit: mm

**Guangxi Liugong Machinery Co., Ltd.**

No. 1 Liutai Road, Liuzhou, Guangxi 545007, PR China  
T: +86 772 3886124 E: overseas@liugong.com  
www.liugong.com

04/2014 Designed by LiuGong