



# 230R Bulldozer



<b>Engine</b>	Cummins
<b>Gross Power</b>	179 kW (243 hp) @ 2,000 rpm
<b>Net Power</b>	169 kW (230 hp) @ 2,000 rpm
<b>Maximum Torque</b>	1,050 Nm
<b>Blade Capacity</b>	12.8 m <sup>3</sup>
<b>Operating Weight</b>	26,280 kg

# 230R

## Bulldozer



### ENGINE

Emission Regulation	Tier 2/ Stage II
Make	Cummins
Gross Power	179 kW (243 hp) @ 2,000 rpm
Net Power	169 kW (230 hp) @ 2,000 rpm
Peak Torque	1,050 N·m @ 1,400 rpm
Number of Cylinders	6
Aspiration	turbo air-to-air after cooled
Displacement	14 L

### TRANSMISSION

Transmission Type	Power shift
Maximum Travel Speed, fwd	11.8 km/h
Maximum Travel Speed, rev	14.3 km/h
Number of Speeds, fwd	3
Number of Speeds, rev	3

### ELECTRICAL SYSTEM

System Voltage	24 V
----------------	------

### UNDERCARRIAGE

Shoe Width	910 mm
Number of Shoes per Side	39
Number of Upper Rollers per Side	2
Number of Bottom Rollers per Side	7
Shoe Ground Pressure	83.1 kPa
Track on Ground	2,840 mm

### DIMENSIONS

Overall Length	5,930 mm
Height to Top of Cab	3,420 mm
Ground Clearance	405 mm

### OPERATING WEIGHTS

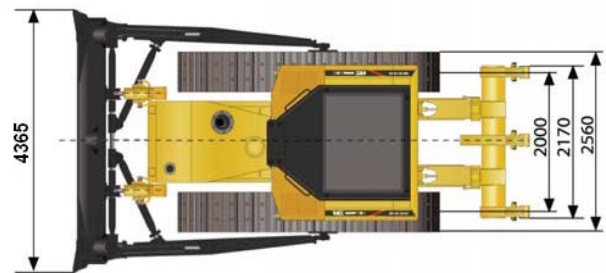
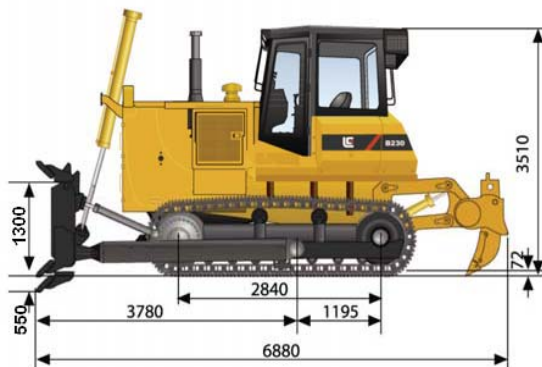
Operating Weight	26,280 kg
------------------	-----------

### BLADE PERFORMANCE

Blade Type (referenced)	straight
Blade Capacity (referenced)	12.8 m <sup>3</sup>
Blade Width	4,365 mm
Blade Height	1,885 mm
Blade Depth below Ground	550 mm
Blade Lift above Ground	1,300 mm
Blade Tilt	735 mm

### SERVICE CAPACITIES

Fuel Tank	480 L
Engine Oil	45 L
Cooling System	79 L
Hydraulic System Total	110 L
Transmission and Torque Converter	122 L
Final Drives, each	82 L



Unit: mm

Guangxi Liugong Machinery Co., Ltd.

Specifications and designs are subject to change without notice. Machines shown may include optional equipment.