

# SHANTUI

# SD26

Crawler Dozer



Engine Model: Weichai WP12  
Gross Power: 206kW(277hp)@1900rpm  
Operating Weight: 25,700kg

Shantui Torqflow Travel Drive  
powershift transmission

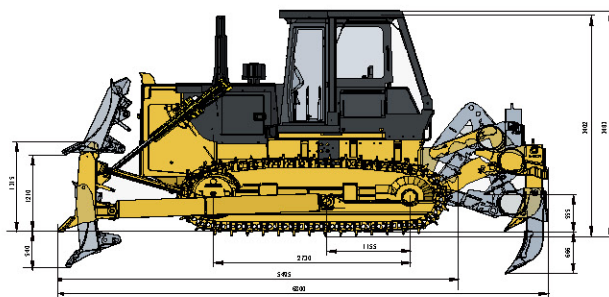


# SD26 SPECIFICATIONS

ENGINE	SD26	SD26F	SD26E	SD26S
Engine	WEICHAI WP12			
Emission	China-III			
Rated revolution	1900rpm			
Gross power	206kW(277hp)@1900rpm			
Net power	194kW(260hp)@1900rpm			
Number of cylinder-bore×stroke	6-126X155mm			
Displacement	11.596L			
Max. torque	1250N.m@1200-1300rpm			
Cooling system	Mechanic fan			

DRIVE SYSTEM	SD26	SD26F	SD26E	SD26S
Drive system	Manufactured by SHANTUI, with high working efficiency, low breakdown rate; torqflow transmission, 3 gears forward and 3 gears backward.			
Traveling speed	Forward	F1:3.8km/h F2:6.9km/h F3:11.8km/h		
	Backward	R1:4.5km/h R2:8.1km/h R3:13.9km/h		
Max. theoretical traction force	460kN			
Torque converter	3-element, single stage, 1-phase			
Transmission	Planetary gear and torqflow transmission hydraulically actuated, forced lubrication			
Central drive	Spiral bevel gear, single-stage speed reduction, splash lubrication			
Steering clutch	Wet multiple disc, disc spring loaded, hydraulically actuated, hand operated, interconnected with steering brake.			
Brake clutch	Wet, contracting band, foot operated with hydraulic booster			
Final drive	Spur gear, double reduction ,splash lubrication			

CHASSIS SYSTEM	SD26	SD26F	SD26E	SD26S
Type	Swing type of sprayed beam, suspended structure of equalizer bar			
Track shoe type	Single grouser			Wetland type
Track gauge	2000mm	2000mm	2000mm	2000mm
Width of track shoe	560/610/660mm	610/660mm	560/610/660mm	910mm
Track grounding length	2730mm	2730mm	3050mm	3480mm
Track grounding area	28727cm <sup>2</sup>	34733cm <sup>2</sup>	38317cm <sup>2</sup>	71476cm <sup>2</sup>
Number of track shoe	38 pcs/side	38 pcs/side	41 pcs/side	45 pcs/side
Grounding pressure (standard configuration)	66kPa	64kPa	66kPa	35.2kPa
Number of carrier roller	2 pcs/side	2 pcs/side	2 pcs/side	2 pcs/side
Number of track roller	6pcs/side	6pcs/side	7pcs/side	8pcs/side
Pitch	206mm	206mm	206mm	206mm



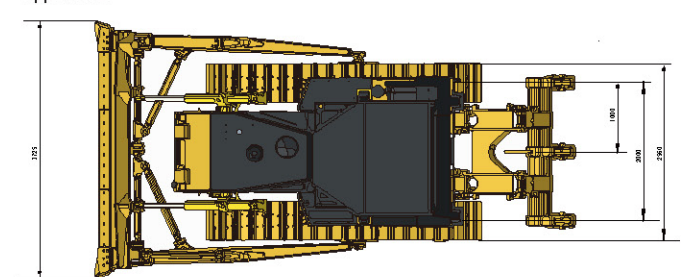
REFILL CAPACITY	SD26	SD26F	SD26E	SD26S
Fuel capacity	450L	450L	450L	450L
Coolant liquid capacity	69L	69L	69L	69L
Engine oil capacity	24L	24L	24L	24L
Hydraulic oil tank	110L	110L	110L	110L
Transmission	122L	122L	122L	122L
Final drive	82L/side	82L/side	82L/side	102L/side

OPERATING WEIGHT	SD26	SD26F	SD26E	SD26S
Standard	23450kg	24700kg	24600kg	25700kg

BLADE	SD26	SD26F	SD26E	SD26S
Blade type	Straight-tilt /Angle/Semi-U/U blade			Straight-tilt blade
Blade capacity	4.6/3.4/6.7/5.8m <sup>3</sup>			5.2m <sup>3</sup>

DIMENSION	SD26	SD26F	SD26E	SD26S
Machine height (without ROPS)	3402mm	3402mm	3402mm	3402mm
Track grouser height	72mm	72mm	72mm	123mm Wetland type
Ground clearance	405mm	405mm	405mm	513mm
Machine length (without draw bar)	5462mm	5462mm	5712mm	6257mm
Machine length (with draw bar)	5495mm	5495mm	5745mm	6290mm
Max. lifting height of blade	1210mm	1210mm	1210mm	1330mm
Max. digging depth of blade	540mm	540mm	540mm	550mm
Digging angle of blade	55°(deg.)	55°(deg.)	55°(deg.)	55°(deg.)
Blade width	3725mm	3725mm	3725mm	4365mm
Blade height	1315mm	1315mm	1315mm	1248mm
Width from end of left track shoe to end of right track shoe (standard)	3000mm	3000mm	3000mm	3800mm

RIPPER		
Type	Three-shank ripper	Single shank ripper
Weight	2600kg	2450kg
Q Max. ripping depth	666mm	695mm
R Max. lifting height	555mm	515mm
S Ripper length (at deepest ripping)	1781mm	1974mm
T Ripper width	2158mm	1762426mm
U Departure angle (at highest lifting)	25.5°	25.5°
V Ripping width	2000mm	1060mm
W Distance between ripper teeth	930mm	



\* THE SPECIFICATIONS ARE SUBJECT TO CHANGE WITHOUT NOTICE. THE PICTURES MAY INCLUDE OPTIONS. THE ACTUAL COLOR & APPEARANCE OF THE PRODUCT MAY DIFFER FROM WHAT IS SHOWN.

SHANTUI CONSTRUCTION MACHINERY CO., LTD.

ADD: No. 58, G327 Highway Jining City, Shandong, CHINA

TEL: +86-537-2909369

FAX: +86-537-2311219

EMAIL: trade@shantui.com

WEB: www.shantui.com

**SHANTUI**  
LET'S MAKE CONSTRUCTION EASIER