

# SHANTUI

# SD22

Crawler Dozer



Engine Model: Cummins NT855-C280S10  
Gross Power: 175kW(235hp)@1800rpm  
Operating Weight: 23,450kg

Shantui Torqflow Travel Drive  
powershift transmission

# SD22 SPECIFICATIONS

ENGINE	SD22/W	SD22C	SD22F	SD22D/E	SD22S	SD22R
Engine	Cummins NT855-C280S10					
Emission	China-I					
Rated revolution	1800rpm					
Gross power	175kW(235hp)@1800rpm					
Net power	162kW(220hp)@1800rpm					
Number of cylinder-bore×stroke	6-140X152mm					
Displacement	14.01L					
Max. torque	1080N.m@1300rpm					
Cooling system	Mechanic fan					

DRIVE SYSTEM	SD22/W	SD22C	SD22F	SD22D/E	SD22S	SD22R
Drive system	Manufactured by SHANTUI, with high working efficiency, low breakdown rate; torqflow transmission, 3 gears forward and 3 gears backward.					
Traveling Speed	Forward	F1:3.6km/h R2:6.5km/h F3:11.2km/h				
	Backward	R1:4.3km/h R2:7.7km/h R3:13.2km/h				
Max. theoretical traction force	450kN					
Torque converter	3-element, single stage, 1-phase					
Transmission	Planetary gear and torqflow transmission hydraulically actuated, forced lubrication					
Central drive	Spiral bevel gear, single-stage speed reduction, splash lubrication					
Steering clutch	Wet multiple disc, disc spring loaded, hydraulically actuated, hand operated, interconnected with steering brake.					
Brake clutch	Wet, contracting band, foot operated with hydraulic booster					
Final drive	Spur gear, double reduction, splash lubrication					

CHASSIS SYSTEM	SD22/W	SD22C	SD22F	SD22D/E	SD22S	SD22R
Type	Swing type of sprayed beam, suspended structure of equalizer bar					
Track shoe type	Single grouser			Wetland type		
Track gauge	2000mm	2000mm	2000mm	2000mm	2250mm	2250mm
Width of track shoe	560/610/660mm	660mm	610/660mm	560/610/660mm	910mm	910mm
Track grounding length	2430mm	2430mm	2430mm	3050mm	3480mm	3480mm
Track grounding area	28727cm <sup>2</sup>	40935cm <sup>2</sup>	40935cm <sup>2</sup>	38317cm <sup>2</sup>	71476cm <sup>2</sup>	71476cm <sup>2</sup>
Number of track shoe	38pcs/side	38pcs/side	38pcs/side	41pcs/side	45pcs/side	45pcs/side
Grounding pressure (standard configuration)	66kPa	57.5kPa	64kPa	66kPa	36kPa	35.2kPa
Number of carrier roller	2 pcs/side					
Number of track roller	6pcs/side			7pcs/side	8pcs/side	
Pitch	206mm					

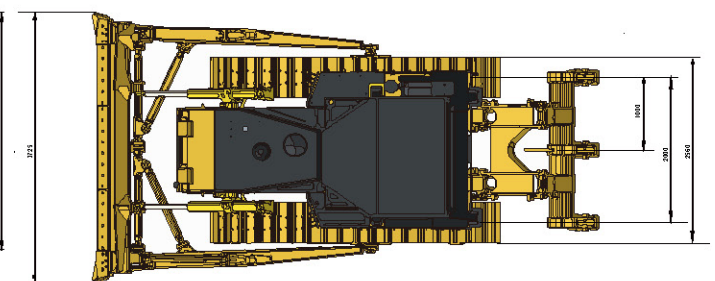
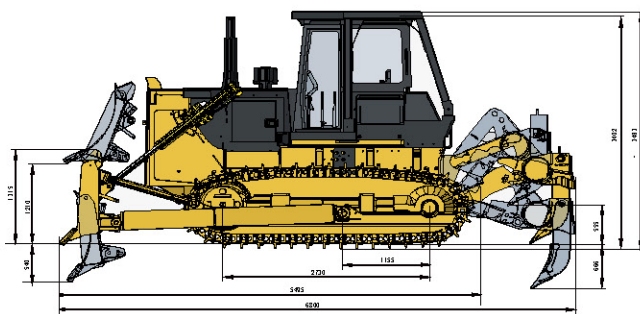
REFILL CAPACITY	SD22/W	SD22C	SD22F	SD22D/E	SD22S	SD22R
Fuel capacity	450L	450L	450L	450L	450L	450L
Coolant liquid capacity	79L	79L	79L	79L	79L	79L
Engine oil capacity	45L	45L	45L	45L	45L	45L
Transmission	122L	122L	122L	122L	122L	122L
Drive axle	110L	110L	110L	110L	110L	110L
Final drive	82L/side	82L/side	82L/side	102L/side	102L/side	102L/side

OPERATING WEIGHT	SD22/W	SD22C	SD22F	SD22D/E	SD22S	SD22R
Operating weight (standard)	23450kg	24000kg	24700kg	24600kg	25700kg	26000kg

BLADE	SD22/W	SD22C	SD22F	SD22D/E	SD22S	SD22R
Blade type	Coal-U	Straight-tilt/Angle/Semi-U/U			Straight-tilt	Waste handling
Blade capacity	8m <sup>3</sup>	4.6/3.4/5.8/6.7m <sup>3</sup>			5.2m <sup>3</sup>	11.8m <sup>3</sup>

DIMENSION	SD22/W	SD22C	SD22F	SD22D/E	SD22S	SD22R
Machine height (without ROPS)	3402mm	3402mm	3402mm	3402mm	3402mm	3402mm
Track grouser height	72mm	72mm	72mm	72mm	123mm (Wetland type)	123mm
Ground clearance	405mm	405mm	405mm	405mm	513mm	513mm
Machine length (without draw bar)	6027mm	5462mm	5462mm	5712mm	6257mm	6257mm
Machine length (with draw bar)	6060mm	5495mm	5495mm	5495mm	6290mm	6290mm
Max. lifting height of blade	1210mm	1210mm	1210mm	1210mm	1330mm	1330mm
Max. digging depth of blade	540mm	540mm	540mm	540mm	550mm	550mm
Digging angle of blade	55°±3°(deg.)					
Blade width	4200mm	3725/4365/3800/3725mm			4365mm	
Blade height	1350mm	1315/1055/1343/1374mm			1248mm	1885mm
Width from end of left track shoe to end of right track shoe (standard)	3000mm	3000mm	3000mm	3000mm	3800mm	3800mm

RIPPER		
Type	Three-shank ripper	Single shank ripper
Weight	2600kg	2450kg
Max. ripping depth	666mm	695mm
Max. lifting height	555mm	515mm
Ripper length (at deepest ripping)	1781mm	1974mm
Ripper width	2158mm	1426mm
Departure angle (at highest lifting)	25.5°	25.5°
Ripping width	2000mm	2000mm/106mm
Distance between ripper teeth	930mm	-



\* THE SPECIFICATIONS ARE SUBJECT TO CHANGE WITHOUT NOTICE. THE PICTURES MAY INCLUDE OPTIONS. THE ACTUAL COLOR & APPEARANCE OF THE PRODUCT MAY DIFFER FROM WHAT IS SHOWN.

**SHANTUI CONSTRUCTION MACHINERY CO., LTD.**  
 ADD: No. 58, G327 Highway Jining City, Shandong, CHINA  
 TEL: +86-537-2909369  
 FAX: +86-537-2311219  
 EMAIL: trade@shantui.com  
 WEB: www.shantui.com

**SHANTUI**  
 LET'S MAKE CONSTRUCTION EASIER