

SHANTUI

SD16TR

Crawler Dozer



Engine Model: Weichai WD10G178E25
Gross Power: 131kW(175hp)@1850rpm
Operating Weight: 18,400kg

Shantui Torqflow Travel Drive
powershift transmission

SD16TR SPECIFICATIONS

ENGINE

Engine	WEICHAH WD10G178E25
Emission	CHINA II
Rated revolution	1850 rpm
Gross power	131 kW(175hp)@1850 rpm
Net power	120 kW(160hp)@1850 rpm
No. of cylinder-bore×stroke	6-126 mm*130mm
Displacement	9.726 L
Max. torque	765 N.m@1100-1200 rpm
Cooling system	Mechanic fan

DRIVE SYSTEM

Drive system Manufactured by SHANTUI, with high working efficiency, low breakdown rate; mechanically transmission, 5 gears forward and 4 gears backward.

Traveling speed	Forward	F1:2.67km/h F2:3.76km/h F3:5.41km/h F4:7.62km/h F5:11.13km/h
	Backward	R1:3.48km/h R2:4.90km/h R3:7.05km/h R4:9.92km/h

Main clutch Wet, multi-plate, with inertia brake and hand-operated hydraulic booster

Transmission Helical gear constant mesh, forced lubrication, manual transmission, 5 forward and 4 reverse gears

Bevel gear shaft Spiral bevel gear, single-stage speed reduction, splash lubrication

Steering clutch Wet multiple disc, disc spring loaded, hydraulically actuated, hand operated, interconnected with steering brake.

Brake Wet, contracting band, foot operated with hydraulic booster

Final drive Spur gear, double reduction ,splash lubrication

CHASSIS SYSTEM

Type Swing type of sprayed beam, suspended structure of equalizer bar

Track shoe type Wetland type

Track gauge 2300 mm

Width of track shoe 1100 mm/950 mm/660 mm

Track grounding length 3140 mm

Track grounding area 69080 cm²

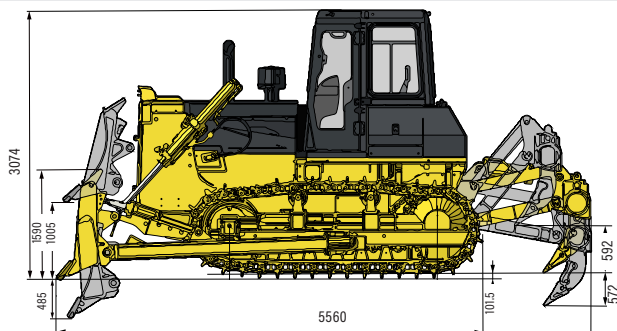
Number of track shoe 44 pcs/side

Grounding pressure 23 kPa (standard configuration)

Number of carrier roller 2 pcs/side

Number of track roller 7 pcs/side

Pitch 203 mm



REFILL CAPACITY

Fuel capacity	320 L
Coolant liquid capacity	62.8 L
Engine oil capacity	24 L
Hydraulic oil tank	112 L
Transmission	52 L/single side
Drive axle	70 L
Final drive	25 L/single side

OPERATING WEIGHT

Operating weight 18400 kg

BLADE

Blade type R Blade

Blade capacity 8.3 m³

DIMENSION

A Machine height (with ROPS) 3074 mm

B Track grouser height 101.5 mm

C Ground clearance 495 mm

D Machine length (without draw bar) 5560 mm

F Max. lifting height of blade 1005 mm

G Max. digging depth of blade 485 mm

H Digging angle of blade 55°±3°(deg.)

I Blade width 4150 mm

J Blade height 1590 mm

O Width from end of left track shoe to end of right track shoe 3400 mm

RIPPER

Type Three-shank ripper

Weight 1631 kg

Max. ripping depth 572 mm

Max. lifting height 592 mm

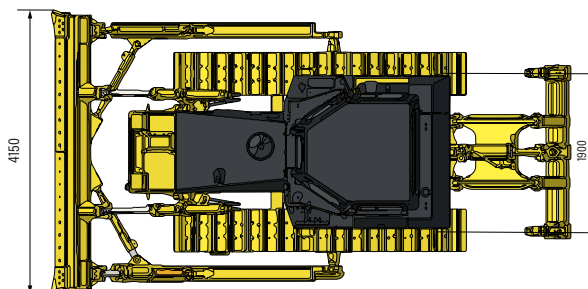
Ripper length (at deepest ripping) 1580 mm

Ripper width 2080 mm

Departure angle (at highest lifting) 32.1°

Ripping width 1900 mm

Distance between ripper teeth 950 mm



* ТЕХНИЧЕСКИЕ ХАРАКТЕРИСТИКИ МОГУТ БЫТЬ ИЗМЕНЕНЫ БЕЗ ПРЕДВАРИТЕЛЬНОГО УВЕДОМЛЕНИЯ. ФОТОГРАФИИ МОГУТ ВКЛЮЧАТЬ В СЕБЯ РАЗЛИЧНЫЕ ВАРИАНТЫ. ДЕЙСТВИТЕЛЬНОСТЬ ЦВЕТ И ВНЕШНИЙ ВИД ИЗДЕЛИЯ МОГУТ ОТЛИЧАТЬСЯ ОТ ТОГО, ЧТО ПОКАЗАНО НА РИСУНКЕ.

SHANTUI CONSTRUCTION MACHINERY CO., LTD.

ADD: No. 58, G327 Highway Jining City, Shandong, CHINA

TEL: +86-537-2909369

FAX: +86-537-2311219

EMAIL: trade@shantui.com

WEB: www.shantui.com

SHANTUI
VALUE THAT WORKS